

MISSA BREVIS IN D

for Boys' Voices and Organ

IMPORTANT NOTICE
The unauthorised copying
of the whole or any part of
this publication is illegal

BENJAMIN BRITTEN

Op. 63

KYRIE

Slowly moving ($\text{♩}=40$) *f* *passionate*

I
TREBLES

II
TREBLES

III
TREBLES

ORGAN
(Manual
only)

Gt.

Sw.

f

mf

Ky - ri - e e - lei - son,.....

f *passionate*

Ky - ri - e e -

-lei - son,.....

f *passionate*

Ky - ri - e,..... Ky - ri - e e - lei - son,

mp

dim.

I, II *p*

III *p*

Ky - rie e - le - i - son.....

Ky - rie e - le - i - son.....

f

Chri - ste, Chri - ste e - lei - son,.....

p

mp

mf

All rights reserved
Tonsatting forbjudes
Printed in England

I *f* Chri - ste, Chri - ste, Chri - ste, Chri - ste e - lei - son, *ff* Chri - ste e -

II *f* Chri - ste, Chri - ste e - lei - son, *ff* Chri - ste e -

III *ff* Chri - ste e -

f {Gt. *ff*

-le - i - son, *f* Ky - ri - e e - lei - son,

-le - i - son, *f* Ky - ri - e e - lei - son,

-le - i - son,

Sw. *p* *f* *mf* *mp*

Gt.

p *pp* Ky - ri - e e - le - - - i - son,

p *pp* Ky - ri - e e - le - - - i - son,

f *p* *pp* Ky - ri - e, ... Ky - ri - e e - lei - son, Ky - ri - e e - le - - - i - son,

dim. *p* {Sw. *pp*

GLORIA

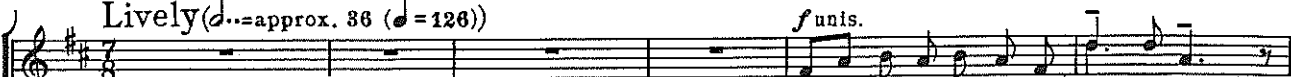


Glo-ri-a.... in ex-cel-sis De-o.

Lively (♩=approx. 36 (♩=126))

f unis.

I, II



TREBLES

Et.... in ter-ra pax ho-mi-ni-bus,
*Glo-ri-a in ex-cel-sis De-o.

III



Et.... in ter-ra pax ho-mi-ni-bus,
*Glo-ri-a in ex-cel-sis De-o.

Lively (♩=approx. 36 (♩=126))

ORGAN



Et in ter-ra pax ho-mi-ni-bus bonae volun-ta-tis. Lau-da-mus te.

Et in ter-ra pax ho-mi-ni-bus bonae volun-ta-tis. Lau-da-mus te.

Be-ne-di-ci-mus te. A-do-ra-mus te. Glo-ri-fi-

Be-ne-di-ci-mus te. A-do-ra-mus te. Glo-ri-fi-

* If the Gloria is not intoned, sing words in italics.

unis.

p

-ca-mus te. Gra-ti-as a-gi-mus ti - bi pro-pter ma-gnam glo-ri-am tu - am.

p

-ca-mus te. Gra-ti-as a-gi-mus ti - bi pro-pter ma-gnam glo-ri-am tu - am.

pp

smooth

I *mf* De - us Pa - ter omni-po-tens..... *f* Do-mi-ne

II *mp* Rex cae-le - stis, *f* Do-mi-ne

III *p* Do-mi-ne De - us, *f* Do-mi-ne

cresc. *f*

I, II unis. *ff* Fi - li u - ni - ge - ni - te... Je - su..... Chri - ste.

III *ff* Fi - li u - ni - ge - ni - te... Je - su Chri - ste.

cresc. *ff*

cresc. *ff*

I *ff* Do-mi-ne De-us, *f* A-gnus De-i, *mf* Fi-li-us Pa-tris, Fi-li-us Pa-tris.

II *ff* Do-mi-ne De-us, *f* A-gnus De-i, *mf* Fi-li-us Pa - - - tris.

III *ff* Do-mi-ne De-us, *f* A-gnus De-i, *mf* Fi-li-us Pa - - - tris.

mf *dim.*

f *mf* *f* *mf*

I, II unis. *pp* mi - se-re-re no-bis.

III *Solo III *pp* all Qui tol-lis pec - ca - ta mun-di, mi - se-re-re no-bis.

pp *pp* *pp*

*Solo II all (I, II) unis. *Solo I Qui tol-lis pec - ca - ta mun - di, su-sci-pe de-pre-ca-ti - o - nem no-stram. Qui se-des ad

pp *pp* *pp*

su-sci-pe de-pre-ca-ti - o - nem no-stram.

* These solos may be sung by the same boy.

Solo I

dim.

all II *p*

dex-te - ram... Pa-tris, ad... dex-te - ram... Pa-tris, mi - se-re-re no-bis,

all III *p*

mi - se-re-re no-bis,

pp

pp

I

f all

Quo-ni-am tu so-lus san-ctus. Tu so - lus... Do-mi-nus.

mf

mi - se-re-re no-bis.

f

f

f

f

f

f

II

mi - se-re-re no-bis.

f

f

f

f

III

mi - se-re-re no-bis.

Tu so - lus... *us*

Tu so - lus... *us*

p

mf

{Gt. *f*

p

f

I, II, unis.

Tu so - lus Al - tis-si-mus.

Tu..... so - lus...

Je - su Chri-ste,

ff

Do-mi-nus.

Tu so - lus Al - tis-si-mus. Tu so-lus...

Je - su Chri-ste,

ff

ff

ff

ff

f *S* *+* *p* *pp*

Je - su Chri - ste, Je - su Chri - ste, Je - su Chri - ste.

f *p* *pp*

Je - su Chri - ste, Je - su Chri - ste, Je - su Chri - ste.

f *mf* *pp* *ppp*

p *pp* *ppp*

mf *pp* *ppp*

I, II unis. *p*

Cum Sancto Spi - ri - tu..... in glo - ria De - i Pa - tris.

p

Cum Sancto Spi - ri tu..... in glo - ria De - i Pa - tris.

pp

smooth

I *pp* *pp*

A - men, A - men,..... A - men.

II *pp* *pp*

A - men, A - men.

III *pp* *pp*

A - men, A - men.

ppp *ppp*

SANCTUS

Broadly (♩=80)

I
TREBLES
San - ctus, San - ctus,

II
TREBLES
San - ctus, San - ctus,

III
TREBLES
San - ctus, San - ctus,

ORGAN
Broadly (♩=80) + 4ft.
pp p mf f
(Man.)

San - ctus Do - mi - nus De - us,

- ctus, San - ctus Do - mi - nus De -

San - ctus Do - mi - nus De - us,

p mf f

Do - mi - nus De - us Sa - ba - oth.

- us, Do - mi - nus De - us Sa - ba - oth.

Do - mi - nus De - us Sa - ba - oth.

mf p

mf ³ ³
 Ple-ni sunt cae-li et ter - ra glo-ri-a tu - a, Ple-ni sunt caeli et ter - ra glo-ri-a tu - a,
mf ³ ³
 Ple-ni sunt cae-li et ter - ra glo-ri-a tu - a, Ple-ni sunt caeli et
mf ³ ³
 Ple-ni sunt cae-li et ter - ra glo-ri-a tu - a, Ple-ni sunt caeli et ter - ra glo-ri-a

mf
 Ped. *mf*

Ple-ni sunt cae-li et ter - ra glo-ri-a tu - - - a.
 ter - ra glo-ri-a tu - a, glo-ri-a tu - a.
 tu a, Ple-ni sunt cae-li et ter - ra glo-ri - a.
 GLORI-A

f *mf*

ff
 Ho - san - na in ex - cel - sis, Ho - san - na in ex - cel - sis,
ff
 Ho - san - na in ex - cel - sis, Ho - san - na in ex - cel - sis,
ff
 Ho - san - na in ex - cel - sis, Ho - san - na in ex - cel - sis,

ff + Mixtures
 5 5

ff

Ho - san - na in ex - cel - sis.

Ho - san - na in ex - cel - sis.

Ho - san - na in ex - cel - sis.

7

mf pp

* When not performed liturgically, play this bar, and go straight to the *Slow and gentle* of the BENEDICTUS.

a little rall.

mf pp

BENEDICTUS
Broadly

Slow and gentle (♩ = slower ♩ of preceding = 66)

Solo III

Be - ne - di - ctus qui..... ve - nit in..... no-mi-ne Do - mi -

(a little rall - -)

pp ppp

ppp Ped.

Solo I

Solo III

Be - ne - di - ctus qui..... ve - nit in..... no-mi-ne Do - mi -

-ni.....

pp

Solo I
- ni. Be - ne - di - ctus qui..... ve - nit in..... no-mi-ne Do -

Solo III
Be - ne - di - ctus qui..... ve - nit in..... no-mi-ne Do - mi -

pp

sim.
- mi - ni, in no - mi - ne..... Do - - - mi -

- ni, in no - mi - ne Do - mi - ni, in no - mi - ne... Do - - mi -

As before (♩=80)

Solo I all *f* *f* marked
- ni. Ho - san - na, Hosanna in ex - cel - - sis,

II *f* *f* marked
Ho - san - na, Hosanna in ex -

Solo III all *f* *f* marked
- ni. Ho - san - na, Hosanna in ex - cel - sis,

As before (♩=80) + 4ft

pp *p* *mf* *f*

ff
Ho - san - na in ex - cel - sis.

ff
- cel - sis, in ex - cel - sis.

ff
Ho - san - na in ex - cel - sis.

ff + Mixtures

mf *p* *pp*

ff

AGNUS DEI

Slow and solemn (♩ = 60)

I, II
TREBLES

III

ORGAN

pp unis.
A - gnus De-i, qui

pp
A - gnus De-i, qui

Soft reed *pp* marked

pp smooth

Ped.

tol - lis pec-ca-ta, pec - ca - ta mun-di: mi-se-re-re no-bis.

tol - lis pec-ca-ta, pec - ca - ta mun-di: mi-se-re-re no-bis.

pp

pp

mf unis.
 A - gnus De - i, qui tol - lis pec - ca - ta, pec -

mf
 A - gnus De - i, qui tol - lis pec - ca - ta, pec -

mf

- ca - ta mun - di: mi - se - re - re no - bis.

- ca - ta mun - di: mi - se - re - re no - bis.

Add

f unis.
 A - gnus De - i, qui tol - lis pec - ca - ta, pec - ca - ta... mun - di:

f
 A - gnus De - i, qui tol - lis pec - ca - ta, pec - ca - ta... mun - di: DONA M.

f *p*

marked p cresc.

marked pp cresc. do - na no - bis pa - cem, *(mf)*

marked pp cresc. do - na no - bis pa - cem, do - na no - bis

do - na no - bis pa - cem, *(mp)* do - na no - bis pa - cem,

pp cresc.

(f) do-na no-bis pa-cem, *ff* do-na no-bis pa-cem, *ff* do-na no-bis pa-cem,

pa-cem, *(f)* do-na no-bis, do-na no-bis pa-cem, *ff* do-na, do-na no-bis pa-cem,

(f) 1 2 do-na no-bis pa-cem, 1 2 do-na no-bis pa-cem, *ff* do-na no-bis pa-cem,

ff *Reduce* *p*

p dim. do-na no-bis pa-cem, *ppp* do-na no-bis pa-cem.

p dim. do-na, do-na no-bis pa-cem, *ppp* do-na no-bis pa-cem.

p dim. do-na no-bis pa-cem, *ppp* do-na no-bis pa-cem.

dim. *ppp*